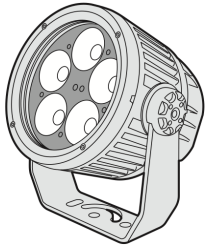


# DYNA DRUM EO WHITE™



Client:

Project:

Type:

Order Code:

Quantity:



**Dyna Drum EO White** is a high output, outdoor rated, white LED floodlight. It features an internal 100-277VAC power supply, onboard DMX+RDM driver, and each unit carries Acclaim's Aria wireless DMX technology inside. It comes with a narrow 5° beam standard, with optional quick-change spread lenses for wider applications. It is ideal for facade lighting applications and as an area floodlight.

## SPECIFICATIONS

Colors	2700K, 3000K, 3500K, 4000K, 5700K
Beam Angles	5° standard, 10°, 20°, 40°, 60°, 10° x 60° spread lens options
Photometrics	See page 4, Up to 3,431 lumens, 202,231 center candela
Effective Projected Area	0.72ft <sup>2</sup>
Control	DMX+RDM, manual dim setting in menu, photocell included, Aria wireless direct connect
Max Fixtures in Series	32 via DMX, power local to each fixture
Power Consumption	62W maximum
Operating Voltage	100-277VAC, 50/60 Hz
Lumen Maintenance	L70 @ 150,000 hours (25° C)
Mounting	Surface mount bracket included, optional tenon mount and pipe clamp available
Finish	Gray standard (RAL 7047), black, white, and custom colors optional
Material	Die cast aluminum, polycarbonate lens, optional marine coating available
Ambient Operating Temperature	-40° F to 125° F (-40° C to 51° C)
IP Rating	IP66, wet location
IK Rating	IK07, protection against 2 joule impact
Fixture Connectors	Attached 5' (1.5m) IP66 hybrid cable, AC power +DMX/RDM
Warranty	5 Years, limited
Weight	11.68 lbs. (5.3 kg)
Dimensions	<b>L:</b> 9.6" x <b>W:</b> 8.8" x <b>D:</b> 6.49" (244mm x 224mm x 165mm)

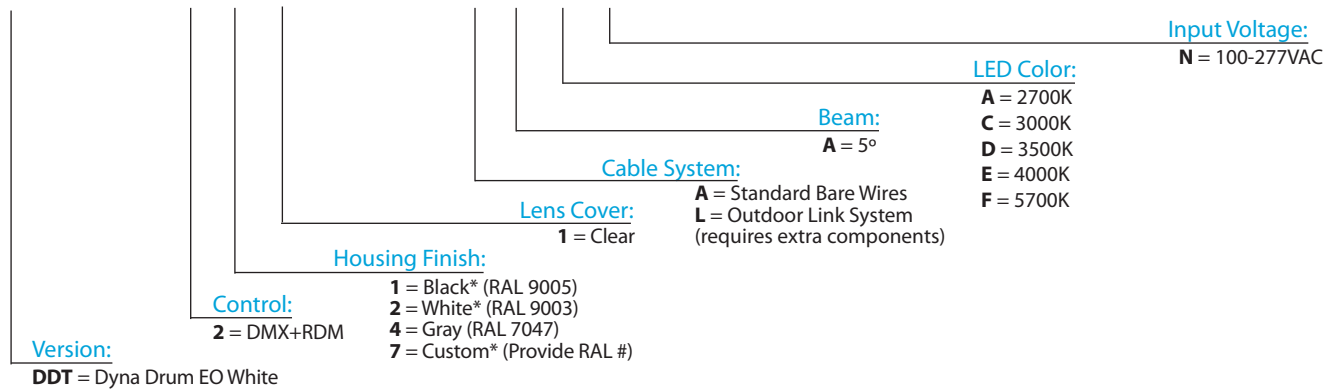
Certifications



## ORDER CODES

\* indicates special order

**DDT - 2 # 1 - # A # N**



## RELATED COMPONENTS

### Optional Beam Accessories



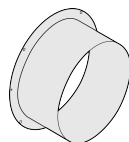
**DDEOSL10**  
10° Spread lens for Dyna Drum EO

**DDEOSL20**  
20° Spread lens for Dyna Drum EO

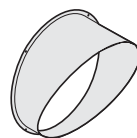
**DDEOSL40**  
40° Spread lens for Dyna Drum EO

**DDEOSL60**  
60° Spread lens for Dyna Drum EO

**DDEOSL1060**  
10° x 60° Spread lens for Dyna Drum EO



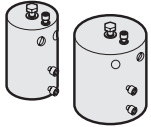
**DDEOFSG** Full snoot for Dyna Drum EO, Gray  
**DDEOF SB** Full snoot for Dyna Drum EO, Black  
**DDEOF SW** Full snoot for Dyna Drum EO, White



**DDEOHSG** Half snoot for Dyna Drum EO, Gray  
**DDEOHSB** Half snoot for Dyna Drum EO, Black  
**DDEOHSW** Half snoot for Dyna Drum EO, White

## RELATED COMPONENTS

### Optional Mounting Accessories



#### TM2

Use with 2" pipe, schedule 40 tenon mount  
(2.51", 64mm inner dia.)

#### TM4

Use with 3.5" pipe, schedule 40 tenon mount  
(4.13", 105mm inner dia.)



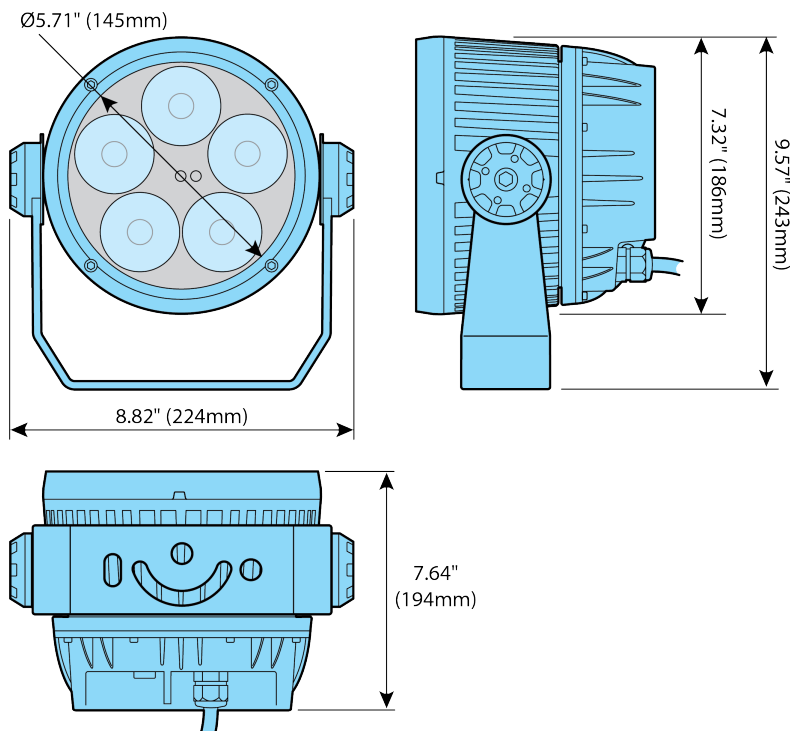
#### PC2

Use with 2" pipe, schedule 40 pipe clamp  
mounts 1 or 2 fixtures

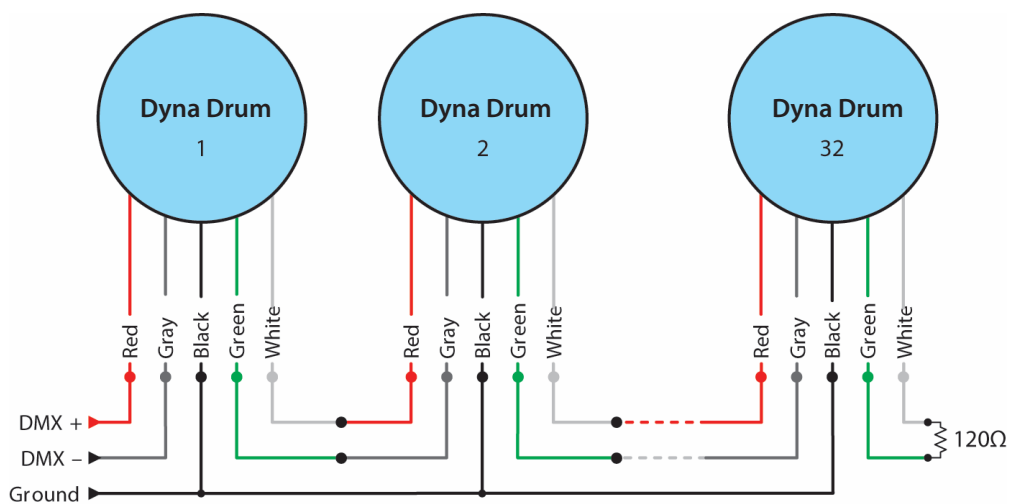
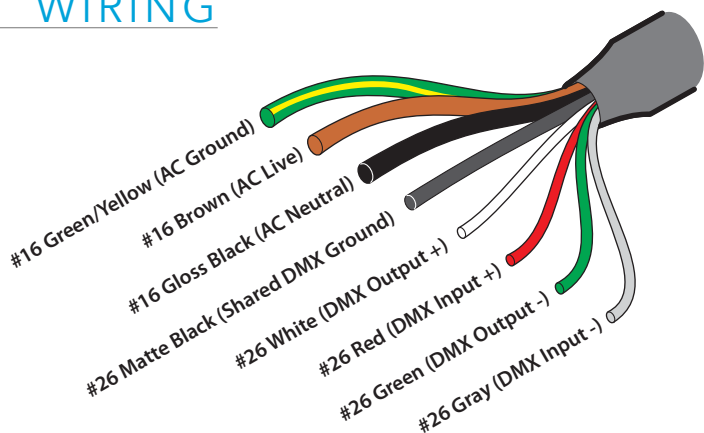
#### PC4

Use with 4" pipe, schedule 40 pipe clamp  
mounts 1 or 2 fixtures

## DIMENSIONS



## WIRING



## PHOTOMETRICS

Color Temp / Beam	Lumens	Center Candela	Efficacy (l/pw)	CRI (Ra)	TM30
<b>2700K, 5°</b>	2,453	162,794	41	80.2	80
<b>3000K, 5°</b>	3,117	172,481	52	80.1	79.1
<b>3500K, 5°</b>	2,897	195,415	50	89.0	88.2
<b>4000K, 5°</b>	2,858	173,951	49	80.1	79
<b>5700K, 5°</b>	3,431	202,231	57	80	79