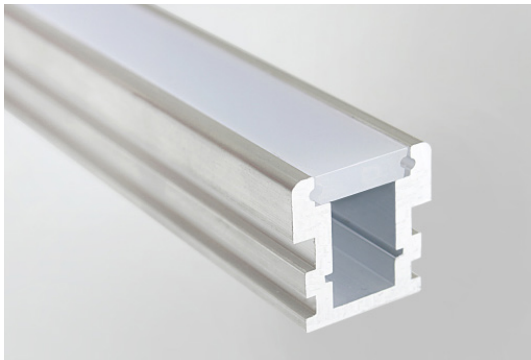


# Flex Exterior Line Channel



Client:

Project:

Type:

Order Code:

Quantity:

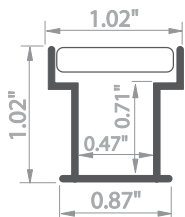
The **Flex Exterior Line Channel** is an anodized aluminum channel, which allows for an outdoor, ingrade installtion of white LED Flex Exterior tapes.

**Compatible with: Flex One SO Exterior, Flex One HO Exterior, Flex Eco Exterior**

## Specifications

Length	3.28' (1m), Cut to length as needed
Material	Double Anodized Aluminum, Polycarbonate Lenses (UV coated)
IP Rating	IP67, Wet Location (when sealed with Dow Corning 799 neutral silicone)
Area Temperature	-40° F - 122° F (-40° C - 50° C)
Warranty	3 Years
Mounting	via Pre-cut Surface and Dow Corning 799 neutral silicone
Weight	1.52 lbs. (0.69 kg)
Dimensions	L: 39.3" (1m) W: 1.02" (2.6cm) H: 1.02" (2.6cm)
Pressure Rating	up to 20 kN static load (4496 lbf)

## Dimensions



# Flex Exterior Line Channel

## Order Code

**FLK EXL:** Flex Exterior Line Channel Extrusion, 1m (3.28')

## Related Components

**FLK EXL OL:** Exterior Line Channel Opal Lens (UV Coated)



**FLK EXL EC:** Exterior Line Channel End Cap



**FLK ELX ECH:** Exterior Line Channel End Cap with Hole



**FLK WPC:** Waterproof Coupler



**FLK WPS:** Waterproof Splitter

